

# MAKING AN IMPACT TOGETHER?



**ORGANISE YOUR EVENT AT  
MUSEON-OMNIVERSUM  
IN THE HAGUE**

**2023-2024**

## INTRODUCTION

Today's global challenges call for change and concrete actions from all of us. By 2030, we must achieve the United Nations Sustainable Development Goals. This is why Museon-Omniversum is committed to contributing to a liveable planet for all. We are more than a museum and large-screen movie theatre. We are the national impact centre for sustainable development.

Museon-Omniversum is the place where companies get inspired, join the conversation and contribute input in the search for the solutions for a sustainable future. With our location, partnerships and business propositions, we both inspire and activate our business visitors.

Plan an event in our unique spaces and combine it with a large-screen movie and/or our interactive One Planet exhibition. Learn about the 17 World Goals and smart solutions for a better future.

Organise your event in Museon-Omniversum and be assured that your visitors will go home with a lot of knowledge and inspiration.

Peter de Haan and Iris van den Akker  
Management Museon-Omniversum

museon  
omniversum



THE EVENT LOCATION  
FOCUSSED ON HUMANITY,  
THE EARTH AND A  
SUSTAINABLE FUTURE

# INSPIRATION FOR A SUSTAINABLE FUTURE



Museon-Omniversum revolves around Planet Earth, people and sustainable development! In our sustainable location, we inspire new generations to commit to a liveable earth for all. As a networking partner and knowledge institute, we connect the public, schools, business and government.

Museon-Omniversum is the only public SDG-House encouraging the public to contribute to the Sustainable Development Goals. With our extraordinary collection, exhibitions and spectacular large-screen films,

we are an authority in making sustainable development accessible to a large and diverse audience.

We show in our museum and large-screen movie theatre how beautiful and special our planet is and how everything is interconnected. The United Nations' 17 Sustainable Development Goals guide everything that takes place in Museon-Omniversum. We are also a platform for all kinds of exciting innovations and initiatives that are being developed as action perspectives for a better future.

## Unique combination of content and application

Museon-Omniversum not only has amazing spaces and facilities, but also contributes to the content programme. We respond to themes relevant to sustainability, help get employees and customers on board with the sustainability strategy and turn knowledge into action.

Our offerings are demand-driven and enriching. For example, we offer each client customisation by tailoring the use of our exhibits, venues and films to the goals and target audience of the event. We also offer tours and inspiration programmes for team building.

## Inspire and power the 17 world goals

In our *One Planet Expo*, you engage in conversation or do assignments based on the 17 Sustainable Development Goals using statements. At each SDG station, you are presented with a different theme. What does each mean to your work/organisation? The tour places your own organisation's (sustainability) goals in a broader perspective and challenges reflection.

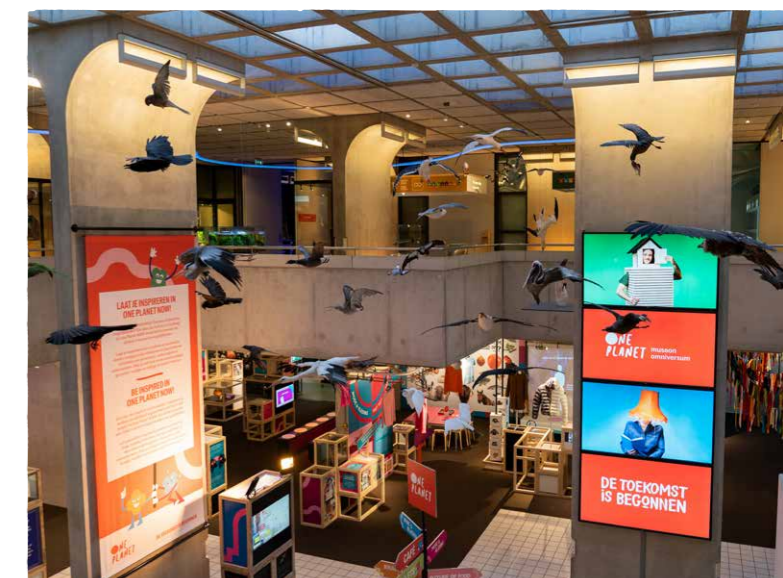
## Hopeful innovations

*One Planet NOW!* introduces you to smart and hopeful solutions for a sustainable future, signalling the need to take action. We work closely with external parties,

companies, NGOs and startups. Visitors can get up close and personal, discovering how you can make your own impact, thanks to the hopeful initiatives that will make the world fairer and keep it liveable. This exhibition inspires and stimulates everyone's curiosity, imagination and creativity.

## Inspire with films

In *One Planet Dome*, our unique dome theatre, you will be immersed in our breathtaking large-screen films about nature, culture and science. On a screen the size of two tennis courts in the shape of a half sphere, see how beautiful the earth is and what we can do together to keep it that way. With film footage all around you, it is as if you are actually there.



# VARIOUS ROOMS

Host your guests in an inspiring museum setting. Museon-Omniversum is the best high-impact venue for your meeting, conference or get-together. Use the amazing spaces in the basement of the museum building and in the impressive dome theatre, break up the event with a museum tour and use the themed spaces for small break-out sessions. Both buildings offer a beautiful, bright foyer for reception, lunch and drinks.



## DOME Dome theatre

- > **Space:** 415 sqm
- > **Theatre:** 300 people

The Dome is the largest domed theatre in the Benelux and unique in Europe. It has a screen in the shape of a half sphere and is the size of two tennis courts. The screen shows dome-filling films and cinema format films. We have a wide range of films to suit your event. The dome screen also offers the chance to communicate your message in a spectacular way. It seats 300 people. The sublime surround-sound system makes the experience even more immersive.

## DOME CAFE Dome theatre

- > **Space:** 400 sqm
- > **Theatre:** 300 people (partially seated)

The foyer in the Dome has a cosy, relaxed feel due to its low ceiling and entrance to the large-screen movie theatre. Suitable for your reception, social gathering or drinks following a programme at the Dome. The Dome Cafe has an area with tables and seating. We can also place standing tables here. Information screens allow you to make your event's message visible in the foyer in a variety of ways.



## AUDITORIUM

Basement of the museum

- > **Space:** 350 sqm
- > **Theatre:** 300 people

The museum's largest room is in the basement: a robust room with a high ceiling and wide, smooth walls. On one wall is a very large screen. The space lends itself perfectly to large gatherings with any arrangement possible. The acoustic quality is unique in the Auditorium.



## STUDIO

Basement of the museum

- > **Space:** 100 sqm
- > **Theatre:** 75 people

The Studio is a tall, square room with a theatrical look. Sturdy camera spotlights hang from the ceiling. This room is suitable for meetings with a medium-sized group. Also available in conjunction with the adjacent Auditorium.



CONNECT THE  
17 SUSTAINABLE  
DEVELOPMENT GOALS  
TO YOUR EVENT



COMBINE YOUR  
EVENT WITH THE  
MUSEUM AND OR A FILM



## INTERNATIONAL LOUNGE

Ground floor of the museum

- > **Space:** 300 sqm
- > **Reception / social gathering:**  
300 people

The foyer in the museum is a bright space with large glass windows, perfect for your reception, social gathering or drinks. The highlight of the lounge is the 15-meter-long skeleton of a sperm whale, one of the museum's key highlights. The lounge adjoins the beautiful garden at the rear.



## MUSEUM CAFE

Ground floor of the museum

- > **Space:** 140 sqm
- > **Lunch:** 50 people

From the Museum Cafe, our in-house caterer Juni Lekkernijen provides excellent lunches, receptions and drinks. Sustainability and health are important pillars in our vision of food and drink. The Museum Cafe has a fresh green interior and is the first vegetarian museum cafe in the Netherlands.



## DISCOVER LAB

Ground floor of the museum

- > **Space:** 83 sqm
- > **Break-out session:** 25 people

The Discover Lab has a techie feel and is great for break-out sessions with a playful character. It encourages the participant to think in technical, practical and creative terms. Variable set-ups are possible.

## SCIENCE LAB

Ground floor of the museum

- > **Space:** 65 sqm
- > **Theatre:** 40 people
- > **Cabaret:** 36 people

Through the dynamic exhibition One Planet NOW! you arrive at the Science Lab. This colourful space invites creativity. At workbenches with school-type stools, the best ideas emerge. It is a little different from working in the other rooms. A perfect place for a meeting with a quirky vibe.

## THEMED ROOMS

1<sup>st</sup> floor in museum

- > **Space:** 35 sqm
- > **Break-out session:** 15-20 people

The museum's collection is very extensive and covers many themes. Some spaces are dedicated to specific topics; exhibition rooms with an interactive angle. They surround you by themes from nature and culture. What topic does your party relate to? Do you have a thing for justice and peace, water, volcanoes & earthquakes, or maybe space travel? By including a theme in your programme, you will undoubtedly come up with a different, original approach, making your meeting more original.

## PANORAMA ROOM

2<sup>nd</sup> floor in museum

- > **Space:** 75 sqm
- > **Theatre:** 50 people
- > **U-shape:** 20 people

The Panorama Room is on the roof of the museum, a kind of rooftop conservatory constructed of glass. A unique place in The Hague with 360 degree views of the Statenkwartier district, the city's rooftops and stately buildings. It is a place that challenges and provokes thought, simply due to the view and the colourful sedum roof all around. An inspiring place for a smaller gathering. And how about a drink as the sun sets over the city?

## TECHNICAL SUPPORT

Audiovisual support is a topic we are happy to discuss when preparing for your event. After all, technology is a key element for (large) events. The right support will help you achieve your goals. We are happy to provide the right resources and support so that your event is hassle-free and flawless.

## ROOM OVERVIEW



THEATRE



CABARET



U-SHAPE



INFORMAL / RECEPTION

<b>DOME</b>	<b>300</b>	-	-	-
<b>DOME CAFE</b>	-	-	-	<b>300</b>
<b>AUDITORIUM</b>	<b>300</b>	<b>150</b>	-	-
<b>STUDIO</b>	<b>75</b>	<b>40</b>	<b>24</b>	-
<b>INTERNATIONAL LOUNGE</b>	-	-	-	<b>300</b>
<b>MUSEUM CAFE</b>	-	-	-	<b>80</b>
<b>DISCOVER LAB</b>	<b>25</b>	-	-	-
<b>SCIENCE LAB</b>	<b>40</b>	<b>36</b>	<b>16</b>	-
<b>PANORAMA ROOM</b>	<b>50</b>	<b>45</b>	<b>20</b>	<b>50</b>
<b>THEMED ROOMS</b>	<b>15-20</b>	-	-	-

The rate for booking the various rooms is determined by the duration of the meeting, desired date, type of room or room size, required audio-visual interpretation and furnishing. So for your meeting, we are happy to prepare a customised price proposal to suit your specific needs.

**NGOs** and **ANBIs** can make use of rooms in Museon-Omniversum at a reduced rate

# THE INSPIRING AND SUSTAINABLE VENUE FOR YOUR MEETING



# CORPORATE SOCIAL RESPONSIBILITY

We are committed to corporate social responsibility and hold Green Key Gold certification.  
Our sustainable in-house caterer is Juni Lekkernijen.

## JUNI LEKKERNIJEN

Juni Lekkernijen is a sustainable and social catering company specialising in developing, setting up, implementing and supervising on-site catering activities.

We provide sustainable and responsible food, good for people and the environment. The menu follows the 80/20 principle, where we offer 80% vegetarian and 20% vegan products. Products are seasonal, with production methods and origins factored in.

We are committed to reducing food waste, following our no-waste policy, and to social impact. Our mission is to make fresh, healthy, delicious and responsible food accessible to everyone. Colourful is one of Juni's most important core values.

It stands for colourful range, colourful staff and colourful atmosphere.

Juni Lekkernijen makes a social impact as part of Social Capital. Of all billed hours, 50% are worked by employees with an occupational limitation. We offer our employees with and without occupational limitations an educational and versatile work environment, where they can further develop in a great paid job.

We enjoy working on long-term collaborations with partners who share our philosophy on food and people. In the process, we like to inspire others about sustainable and responsible food for a better world!



# ARE YOU INTERESTED?



## Museon-Omniversum stands for

- > An inspiring and varied offer through special collections, exhibitions and spectacular large-screen films, including on the 17 Sustainable Development Goals of the United Nations
- > A sustainable and socially responsible location that will enable your event to realise a low CO<sub>2</sub> footprint
- > An SDG House with a networking function and knowledge platform
- > A remarkable building in an international environment

We have beautifully presented the offerings in this brochure, but of course I would rather show you around our two buildings in person. Please feel free to contact me for a no-obligation tour and together we will think about how best to fulfil your event.

With warmest regards,

> **Juliëtte Suurland**  
*Coordinator Sales & Events*

- > 06 - 24712712 / 070 - 33 81 434
- > jsuurland@museon-omniversum.nl
- > sales@museon-omniversum.nl

[museon-omniversum.nl/en/professionals](https://museon-omniversum.nl/en/professionals)

## GENERAL INFORMATION

### Visiting address

**Museum**  
Stadhouderslaan 37  
2517 HV The Hague

### Dome

President Kennedylaan 5  
2517JK The Hague

### Contact

sales@museon-omniversum.nl  
www.museon-omniversum.nl  
070 - 33 81 338

### Accessibility

Museon-Omniversum is easily accessible for wheelchair users. The hallways are wide and barrier-free and there is an elevator. Two (loaner) wheelchairs are available (reserve in advance).

### Accessibility and parking

Museon-Omniversum is easily accessible by public transportation. Please refer to [www.g2g2ov.nl](http://www.g2g2ov.nl) for current information. Around the Museon-Omniversum, you can park along the street. After 1:00 p.m., parking is not free of charge. This rate also applies to the parking lot in front of the Dome. In consultation, we can reserve paid parking at the nearby World Forum and Marriott.

## COLOPHON

### Edition

November 2023  
© Museon-Omniversum, The Hague

### Design and layout

Simone Marchetti

### Photography

Museon-Omniversum



Green Key

SDG  
HOUSE

# museon omniversum

WE ARE  
ONE PLANET



SUSTAINABLE  
DEVELOPMENT  
GOALS

TOGETHER WE  
MAKE OUR  
WORLD A  
BETTER PLACE!



INVEST IN THE FUTURE  
OF OUR PLANET  
BECOME A VALUE OWNER